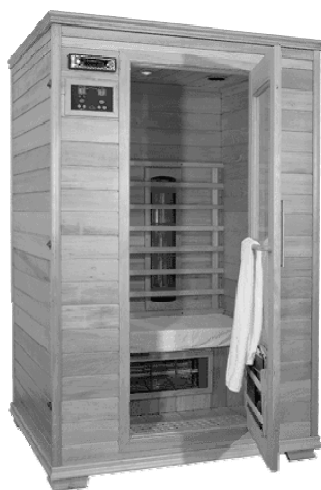


## **Instruction Manual**



Thank you for choosing our infrared sauna!

# Index

=====

Important safety guides.....	2
Introduction, benefits, highlights.....	3
Installation requirements.....	4
Installation procedure.....	5-11
Operation.....	11
Warnings.....	12
Trouble Shooting.....	13-14
Maintenance.....	14
Transportation.....	15
Packing List.....	15

# IMPORTANT SAFETY GUIDES

## READ AND FOLLOW ALL INSTRUCTIONS

- A) Reference to the warning marking provided with the heater, indicating the importance of attaching the marking, using the nails provided in the intended location, at eye level.
- B) A receptacle shall not be installed inside the heated room.
- C) The door of the heated room do not include any locking or latching system, malfunction of which could cause entrapment inside the heated room.
- D) Keep the intended ventilation open when use the dry-bath bathing room.
- E) **CAUTION:** Hyperthermia occurs when the internal temperature of the body reaches a level several degrees above the normal body temperature of 98.6°F(37°C). The symptoms of hyperthermia include an increase in the internal temperature of the body, dizziness, lethargy, drowsiness, and fainting. The effects of hyperthermia include:
- a) Failure to perceive heat;
  - b) Failure to recognize the need to exit the room;
  - c) Unawareness of impending hazard;
  - d) Fetal damage in pregnant women;
  - e) Physical inability to exit the room; and
  - f) Unconsciousness.
- WARNING** – The use of alcohol, drugs, or medication is capable of greatly increasing the risk of fatal hyperthermia.
- F) **CAUTION:** IF THE MANUALLY RESETTABLE TEMPERATURE-LIMITING CONTROL TRIPS FREQUENTLY, A QUALIFIED SERVICEMAN SHOULD BE CONTACTED.
- G) **CAUTION:** IT IS UNLAWFUL TO INSTALL THIS UNIT WITHOUT FIRST OBTAINING A PERMIT FROM THE LOCAL ELECTRICAL INSPECTION AUTHORITY.
- H) **WARNING:** REDUCE THE RISK OF ELECTROCUTION AND BURNS, DO NOT OPERATE UNLESS GUARD IS IN PLACE.
- I) **CAUTION:** EXCESSIVE EXPOSURE CAN BE HARMFUL TO HEALTH. PERSONS WITH POOR HEALTH SHOULD CONSULT THEIR PHYSICIANS BEFORE USING SAUNA.
- J) **CAUTION:** REDUCE THE RICK OF FIRE, DO NOT PLACE COMBUSTIBLE MATERIAL ON HEATER AT ANY TIME.
- K) **WARNING:** REDUCE THE RISK OF OVERHEATING:
- a)EXIT IMMEDIATELY IF UNCOMFORTABLE, DIZZY, OR SLEEPY, STAYING TOO LONG IN A HEATED AREA IS CAPABLE OF CAUSING OVERHEATING.
  - b)SUPERVISE CHILDREN AT ALL TIMES.

- c) CHECK WITH A DOCTOR BEFORE USE IF PREGNANT, IN POOR HEALTH, OR UNDER MEDICAL CARE.
- d) BREATHING HEATED AIR IN CONJUNCTION WITH CONSUMPTION OF ALCOHOL, DRUGS, OR MEDICATION IS CAPABLE OF CAUSING UNCONSCIOUSNESS.
- L) WARNING: REDUCE THE RISK OF ELECTROCUTION, DISCONNECT THE SUPPLY CONNECT BEFORE SERVICING.

## SAVE THESE INSTRUCTIONS

### 1. Introduction

We welcomes you to the most affordable infrared sauna in the nation! We also congratulate you on your new path to better health! Thousands of users enjoy the benefits of infrared saunas every day. Infrared saunas help you burn calories, reduce toxins, relieve pain and even clear complexions. Now you can enjoy the great benefits of far-infrared heat within the privacy of your own home.

We strives to deliver superior home health products at an affordable price. Our list of clients grows daily and we believe that your success is our success. Our staff has over 15 years of combined professional experience and is ready to provide you with excellent customer service.

### 2. Health & Beauty Benefits

**Relieve pain:** The far-infrared rays of a sauna accelerate the blood circulation and supply more oxygen to the body. Increased blood circulation diminishes inflammation, relieves pain, and speeds up recovery. Infrared saunas have also been used to treat bursitis, rheumatism, arthritis, and hemorrhoids. Increased blood circulation not only alleviates internal ailments, but also skin conditions such as psoriasis, eczema and scars. Good circulation is essential for smooth and firm skin.

**Burn calories & fat:** The far-infrared rays of the sauna eliminate extra salt and subcutaneous fat. Burn up to 600 calories in one half hour session versus a half hour of jogging which burns 300 calories, and a half hour of cycling burns 225 calories.

**Relax your body and mind:** It supplies you for a special environment with 30°C-65°C. The far infrared wave pass through your body, speed the metabolism, accelerate the blood circulation, bring the fresh oxygen and nutriment into the organization, the rubbish expel from body along with the sweat, renew the energy quickly, then relieve tiredness. When enjoying the wave, you can listen to the music in CD , it can relax your body .Besides, far infrared sauna can cure the insomnia, and other other stress related disorders.

### 3. Highlights

- a. High quality craftsmanship

- b. Automatic thermostat for constant temperature
- c. Timer and buzzer: buzzer sounds 5 minutes before the end of session
- d. Digital sensor and thermometer
- e. Infrared heating pipes
- f. AM/FM Car Stereo w/ CD player and speakers (*room style model only*)

## **Installation**

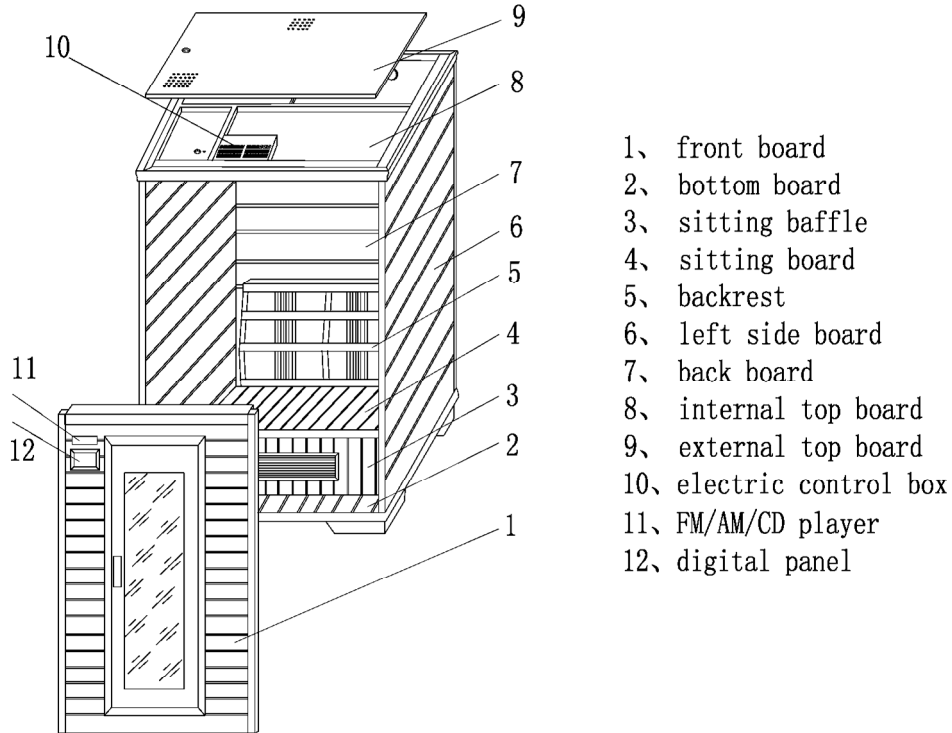
### **1. Installation requirements**

- a. Do not plug any other appliances into the outlet with your our infrared sauna.
- b. Install the sauna on a completely level floor.
- c. Do not spray the exterior with water. Keep the sauna installed in a high & dry place.
- d. Do not store flammable objects or chemical substances near the sauna.

## Installation procedure

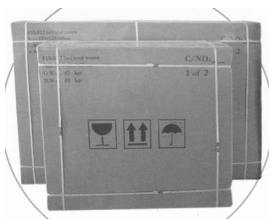
### Sauna Room:

1. Structure of Infrared Sauna. **See FIG-1**

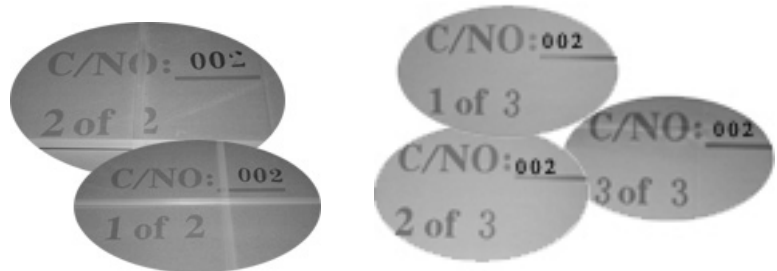


- 1、 front board
- 2、 bottom board
- 3、 sitting baffle
- 4、 sitting board
- 5、 backrest
- 6、 left side board
- 7、 back board
- 8、 internal top board
- 9、 external top board
- 10、 electric control box
- 11、 FM/AM/CD player
- 12、 digital panel

2. One person and two person unit are packed into two cartons. **See FIG-2** for example: C/NO: 002 1OF 2 and C/NO: 002 2 OF 2 are for one unit.



**FIG-2** Two cartons



**FIG-2.1** C/No.

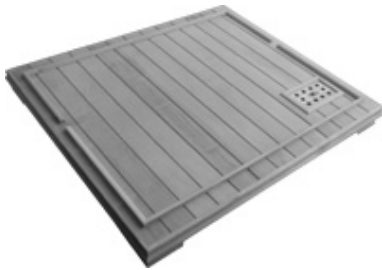
3-persons sauna, corner sauna and 4-persons sauna are packed in 3cartons, for example: C/NO: 002 1OF 3, C/NO: 002 2 OF 3 and C/NO: 002 3 OF 3 are for one unit;

3. Make sure all parts are present before installing the unit. See packing list below.

- A. User manual    B. Bottom board    C. Back Board    D. Left side board    E. Right side board
- F. Sitting baffle    G. Sitting board    H. Back rest    I. Front board    J. Internal top board
- K. External top board    L. CD Player    M. CD player back cover    N. Screwdriver    O. Towel shelf

4. Place the bottom board (section 4, Sauna room diagram, p.3) in the desired location of your sauna,

and make sure which side is the front and which side is the back. **See FIG-3.**



**FIG-3** Placing bottom floor



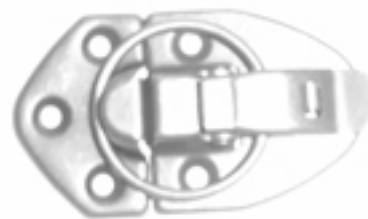
**FIG-4** Assembling back board

5. Align the backboard with bottom board's corresponding battens; make sure they are in line. **See FIG-4**

6. Align the left board with bottom board's corresponding battens; make sure left board fits flush into backboard. **See FIG-5**



**FIG-5** Assembling left board



**FIG-6** Latching

7. The latch has a guide tab that must be placed in the guide slot for alignment. Pick up the back panel (hold it upright to the floor panel) and place the tab in the slot, do not latch at this time. When the back wall and the front wall/side wall are set together on the floor panel, close and latch it. **See Figure 6**



**FIG-7** Assembling right board



**FIG-8** Assembling sitting board's support

8. Align the right board with bottom board's corresponding battens; make sure right board fits flush into backboard and latch together. **FIG-7**

9. Slide the sitting baffle down vertically into the slot within left and right panel. Next, connect the bench's heater element wire to corresponding wire from the back wall, then locate sitting baffle and slide into place. **See Figure 8,9** Note: Make sure the wires are connected tightly, otherwise the heater will not work.



**FIG-9** Connecting wire



**FIG-10** Assembling sitting board

10. Put the sitting board horizontally on corresponding battens of the backboard. **See FIG-10**

11. Screw the backrest onto the backboard. (section 12) **See FIG-11**



**FIG-11** Assembling sitting board



**FIG-12** Assembling front board

12. Align the front board (section 3) with bottom board's corresponding battens, and then latch it with the left and right boards respectively. Notes: Take caution of the glass door to avoid damage. **See FIG-12.**

13. Put the wires of front board and backboard into the cabinet to avoid pressing the wires during installing. **See FIG-13.** Open the door, raise the top board high enough to see if it fits with the surrounding boards, then put down.



**FIG-12** Setting the top board



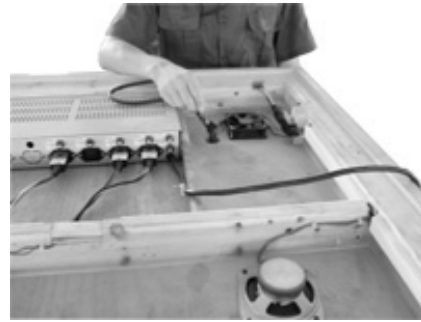
**FIG-14** Leading the wires of heaters onto the board through the corresponding hole

14. During the course of putting down the internal top board, make sure all the wires (mentioned above) and connecting plugs are slipped through the corresponding holes of the top board. All these wires will be led into connecting with the controller on the internal top board. **See FIG-14**

15. **See FIG-15.** Connect all the wires and connectors to the corresponding outlets on the top board. Please be sure all the plugs are connected tightly.



**FIG-15** Connectors on the internal top board



**FIG-16** Put down the wires into the sauna cabin

16. After that, put down the power plugs of the speakers, temperature sensor, control panel and CD player through the hole near the fan on the top board. **See FIG 16**

17. Take out the car stereo with CD player (section 2), check its spare parts, put the stereo into the CD frame. See FIG-17.1. Then screw the attached stereo support to the stereo. **See FIG-17, 17.1, 17.2, 17.3**  
Note: CD player on selected model only.



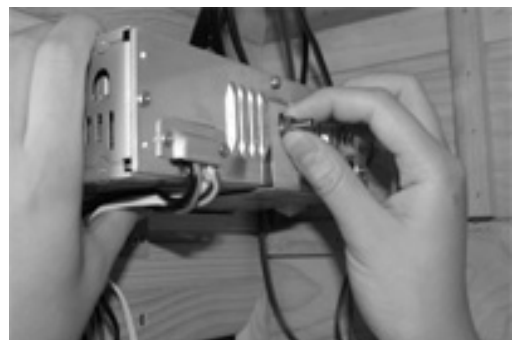
**FIG-17** Checking stereo w/CD spare parts



**FIG-17.1** Fixing stereo w/ CD



**FIG-17.2** Fix the CD to the metal support

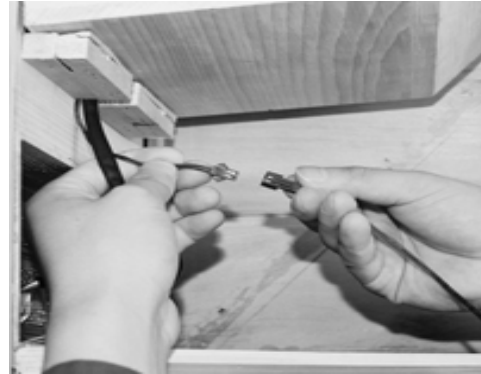


**FIG-17.3** Lock the CD with its metal support

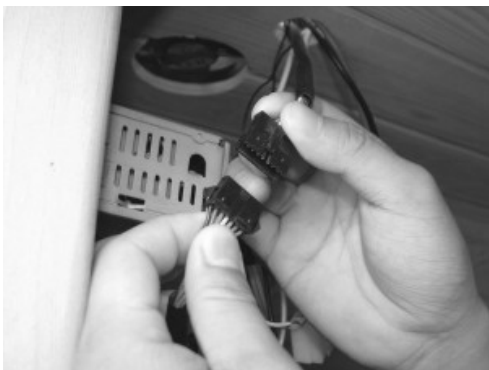
18. All the wirings from top board should be linked with corresponding connectors of the control panel, the CD player, the temperature sensor and the radio antenna. Otherwise, the sauna will not function if any connections are missed. **See FIG 18-21.**



**FIG-18** Link the CD connectors



**FIG-19** Link the sensor connectors



**FIG-20** Link the control panel connectors



**FIG-21** Link the antenna connectors



**FIG-22** CD player back cover and screws



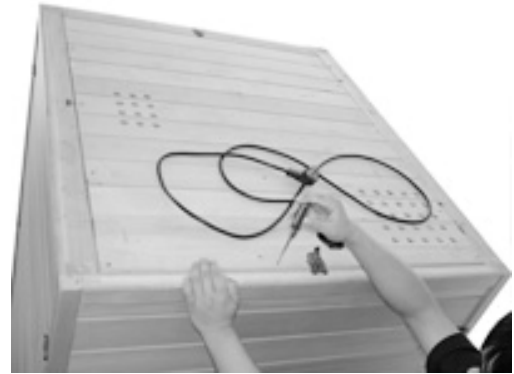
**FIG-22.1** Fix the CD player back cover with screws

19. Take down the bag of screws affixed to the CD player back cover; use a cross screwdriver to screw in the CD player back cover over the CD player. **See FIG-22, 22.1**

20. Making sure all steps are finished correctly, plug in the power and try using the sauna at first to make sure it will work properly. Then put the external top board (section 10) over the internal top board, and take out the power plug through the corresponding hole in the external top board. **See FIG-23**



**FIG-23** Slip the power plug through external top board



**FIG-24** Fix the external board with screws

21. Take the screws affixed on the external top board, then set up the board using the cross screwdriver. **See FIG-24**

**Installation Completed.**

## Operation

### 1. Precautions

- a. Check all the circuitry and the plug meet all requirements.
- b. Set the temperature and time to a comfortable level, normally, 30 minutes at 120°F.
- c. Drink a cup of water before the sauna session.
- d. After 2 hours of continuous use, shut the sauna down for one hour.
- e. To avoid burns, do not touch the heating element.

### 2. Operation

- a. plug the sauna into a 110-120volt-wall outlet which is stated in nameplate. Do not share the outlet with any other appliances. Plug the unit into the outlet and use the ON/OFF switch to activate the sauna. Sauna should be **unplugged** when not in use.
- b. Press the 'temperature' button ▲、▼ to increase or decrease the temperature. Every time the '▲' button is pushed. If pressed for three seconds, the setting will increase quickly. Decrease the temperature in the same manner by pressing the '▼' button. After the sauna reaches the desired temperature, the 'heat' light turns off.
- c. Press the 'time' button ▲、▼ to set the using time. The same operation as b. When the display time is "05", the buzzer will clew 1 minute.
- d. Press the 'light' button to turn the interior light on and off.

- e. After your sauna session, turn off, and unplug the power cable.
- f. To set the time press the 'function' button until the 'time' button blinks. Press the '+' and '-' buttons to set the timer **from 5 to 60 minutes**. If pressed for three seconds, the timer will increase quickly. When the display reads '05', the timer will buzz then the machine will shut off automatically after 5 minutes. To extend the sauna session, reset the timer again.

**g. The Fahrenheit and Centigrade display can be switched: press the temperature button "+" and "-" at the meantime, then press the button of "light" to switch**

#### **h. CD Player**

Please read the instruction of our car stereo with CD player

### **Warnings**

#### **1. Safety precautions**

- a. To avoid fire, do not dry clothes or leave any towels in the sauna.
- b. To prevent burns or electric shocks, do not touch or use metal tools on the net cover of the far infrared heater elements.
- c. While in the sauna, do not touch the light bulb. If the bulb needs to be changed, switch it off and wait until the sauna is shut off and the bulb is cool
- d. Do not spray water on the far-infrared tube. This activity may result in electric shock or damage to the heater elements.
- e. Do not use the infrared sauna if you have any of the following conditions:
  - 1. Open wounds
  - 2. Eye diseases
  - 3. Severe sunburns
  - 4. Elderly & weak people, especially those suffering from a disease, pregnant women and infants are prohibited. Children over the age of 6 years may use the sauna under the supervision of adults.
  - 5. If suffering from a disease directly related to temperature, seek the advice of a doctor before using.
  - 6. Do not place pets in the sauna.
  - 7. Do not use the sauna if you are under the effects of alcohol.

## Trouble Shooting:

	problem	possible reason	countermeasure
1	indicator light for power supply not working	The connector is not connected properly	Check the connector or replace a new one
		No power supply input	check the circuitry ( especially weather there is power supply input)
		Indicator light is broken	replace the circuitry panel
2	Indicator light for function is not working	The heating indicator light is broken	Replace the relevant control panel
		The circuit board or components are broken	Replace the circuit board
		the temperature sensor is broken	check the connect is loosen and replace it
3	Infrared Heater not heating up	The heater is broken	Replace with a new one Of the same specifications
		The wire junction or the heater's wire is loosen	Check and make them tight
		the temperature sensor is broken	check junction of the temperature sensor is loosen and replace it
		the circuit board of the relay is not work	replace the circuit board
4	Odor from the sauna	The circuit's problems	1) there is eyewinker around, remove it 2) some heater's temperature over high,cut off the power supply,replace it 3) parts on the circuitry is broken
5	Light bulb is not working	Light bulb is burned out	Replace the light bulb
		Light bulb wiring is loosen	Replace the lamp holder
		electron transformer is broken	Replace the electron transformer
		Problems with electrical control panel	Repair or replace it
6	Speaker does not work	The speaker is broken	Replace with a new one of the same specifications
		The speaker wire is loosen	Reconnect the speaker wire

		The power indicator light for CD is off	Turn on the switch to start work
7	CD-Player doesn't work	Power connector is loose or damage	Check connector or replace it
		DC power supply is no power to the CD-player	Check DC power supply wiring or replace the power supply
		CD-player is defective	Replace the CD-player
		CD-player protection fuses is burnt out	Replace the fuses
8	Sauna is not power up	Power cord is unplug	Plug back power cord to outlet
		Outlet has no power	Check outlet or circuit breaker
		Power supply or circuit panel is broken	Replace the power supply or related circuitry board
9	The temperature display show "EP"	The connector of temperature sensor is loose or sensor damaged	Tighten the connector of temperature sensor or change to a new temperature sensor.
10	The temperature display show "H"	The temperature inside the sauna room is too high	Turn off the unit, and contact the manufacture.
11	The temperature display show "00", and the temperature on the display is lower than 5 °C after 5minutes.	some of heaters don't work	check whether all heaters are working, change to new heater

## **Maintenance:**

# **USER MAINTENANCE INSTRUCTIONS (CLEAR AND MAINTENANCE)**

### **Cleaning**

Clean the faceplate with a wet towel, or clean with a small amount of hand-soap mixed with warm water if necessary. Clean the sauna room with a wet cotton towel, dry with a clean dry towel. **Do no use**

*benzene, alcohol, or strong cleaning chemicals on sauna. NOTE: Any chemical that can damage wood material will damage the sauna and the protection layer that is on the wood.*

**\*\*\* Do not leave the sauna or CD player on for more than 2 hours at a time. \*\*\***

## **Transportation and storage**

- 1. Avoid exposure to rain, snow or strong collisions during transport.**
- 2. Do not store in damp environments.**

## **Packing list**

1X front panel  
1X backboard  
2X side panels  
1X floor panel  
1X inner top panel  
1X outer top panel  
1X sitting panel (2 pcs for FIR-044)  
1 X sitting baffle (2 pcs for FIR-044)  
1 X backrest (2 pcs for FIR-044)  
3X Heating element tubes for FIR-023L serial  
5X Heating element tubes for FIR-022L serial  
6X Heating element tubes for FIR-033L serial  
6X Heating element tubes for FIR-044L serial  
1X Light bulb  
1X CD player and 2X Speakers  
1X CD player back cover  
1X Bag of screws and bolts  
1X Hand screwdriver  
1X Instruction manual